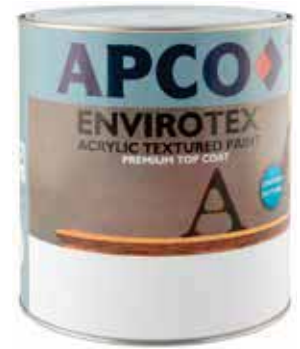


Product Name

Envirotex 380 Acrylic Textured Paint

Product Description

Envirotex 380 Acrylic Textured Paint is acrylic water based coarse sand texture finish for exterior application



Product benefit

Uniform Texture: Envirotex 380 exhibits uniform sand texture pattern that hides imperfection of the surface leaving elegant look.

Ease of application: Envirotex 380 being thick paint in nature is design to with rheology modifier to spread evenly with easeness.

Texture Pattern: Envirotex 380 gives very good texture surface adding unique features to your wall.

Product features

Washability	Moderate
Available Packs	4 Lit, 10 Lit, 20 Lit
Sheen Variants	Matt / Texture
Coverage	Coverage - 1-2 Sqm/lit/coat* *Actual coverage may vary from the quoted coverage due to factors such as method and condition of application and surface roughness and porosity.
Colour Options	White

Areas of Application

The areas of application are exterior cladding, wall, ceilings, asbestos, hardboard, plyboard, masonite boards.

How to Apply

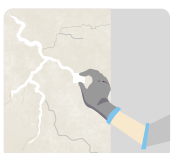
Pre Painting Steps



The surface must be free of dust, mould, grease, oils, efflorescence, fungi, stains, rust and mastic compounds.



A minimum of 30 days is required for proper curing of alkaline substrates.



Cracks and flaws should be filled with quality fillers. Blow-holes and pinholes to be spot primed and filled with texture coating.

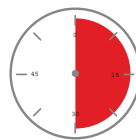
Paint Application / System

Stir the contents thoroughly before use. On very hot days the product may be diluted with up to 5% acrylic drying retarder for ease of application.

Apply one coat of Sureprep Acrylic Sealer Undercoat and allow 4 hours drying time.

Then apply one coat of Envirotex Texture Finish and allow it to dry for 24 hrs. Apply second coat of Envirotex finish or one coat of APCO interior low sheen finish of desired colour.

Drying Time



Touch Dry	1 hr
Recoating Time	24 hrs

Finish - Type / Category


Interior - Premium Sand Texture Finish.

Additional Information

Method of application	Brush, Roller and Spray
Flammability	Non Flammable
Safety Precautions	<ul style="list-style-type: none">• Do not apply when surface temperature is below 10°C.• Provide adequate ventilation during use.• Keep out of reach of children.• Check cross cut adhesion of old paint before repainting.• In normal condition, a week's curing is required to develop full hardness & resistant properties.• Avoid exposure of new paint film to steam for 48 hours and to washing and scrubbing for 7 days.

DISCLAIMER:

Although the facts and suggestions in this publication are based on our own research and are believed reliable, we cannot assume any responsibility for performance or results obtained through the use of our products herein described, nor do we accept any liability for loss or damages directly caused by our products. The user is held to check the quality, safety and all other properties of our product prior to use. Nothing herein is to be taken as permission, inducement or recommendation to practice any patented invention without a license.

 <p>APCO BRILLIANT PAINTS, BRILLIANT COLOURS (Division of Asian Paints (SP) Limited)</p>	<p>FACTORY: P.O. Box 694, Lautoka, FIJI. Ph: 679 6662799; Fax: 679 - 6663959 Email: contact.fiji@apcocoatings.com</p>	<p>SUVA OFFICE: P.O. Box 4202, Samabula, Suva, FIJI. Ph : (679) 3371267/68; Fax: (679) 3371269 Email: contact.fiji@apcocoatings.com</p>
--	--	--